



Special Education

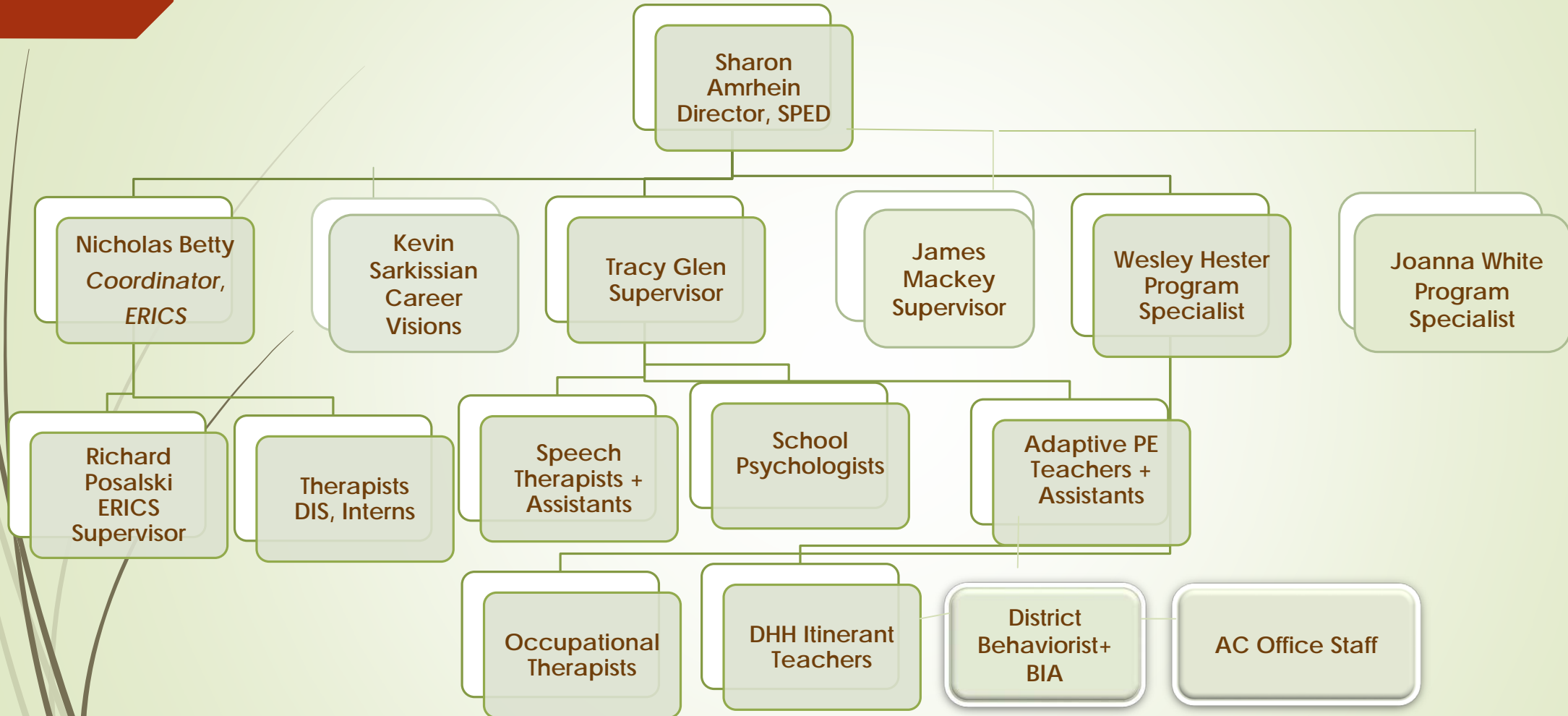
William S. Hart District

September 21, 2016



Department Overview

Special Education Staff



Responsibilities

Budgets - Staffing - Training	Services	“Other Duties as Assigned”
Financial budgets	Assistive Technology	State Compliance
Medi-Cal programs	Occupational Therapy	Legal cases
Classified & certificated staffing	Adaptive PE	Community Action Committee
Classified and certificated trainings	Non-public schools & residential facilities	Special Education Local Planning Agency
	Behavior intervention program	Program Development & Implementation
	Counseling	Discipline
	Home study programs	Charter schools
	Speech	Regional Center Partnership
	Transportation	
	District Translators	

Special Education Students

3,384

June 30, 2016

Totals by Eligibility Category

Eligibility Category	Designation	Number
Deaf	RS, SC1, SC2	12
Deaf-Blind	SC5	1
Hard of Hearing	RS, SC1, SC2	42
Intellectual Disability	SC2, SC5	115
Multi-handicapped	SC5	28
Orthopedic Impairment	RS, SC1, SC2, SC5	31
Other Health Impairment	RS, SC1, 2, 3, 5, 6, 7, 8	519
Emotional Disturbance	SC3, SC6	279
Specific Learning Disability	RS, SC1	1,666
Speech Impairment	RS, SC1, 2, 3, 5, 6, 7, 8	234
Traumatic Brain injury	RS, SC1, SC2	8
Visual Impairment	RS, SC1, SC5	14
Autism	SC7, SC8	435

Total 3,384

Programs by School Site



Junior High School	Special Education Programs
Arroyo Seco	Resource, SC 1
La Mesa	Resource, SC1, SC2, SC5, SC8
Placerita	Resource, SC1
Rancho Pico	Resource, SC1, SC3, SC7
Rio Norte	Resource, SC1, SC2, SC5, SC8
Sierra Vista	Resource, SC1, SC3, SC7

Programs by School Site

High School	Special Education Programs
Canyon	Resource, SC1, SC3, SC7
Golden Valley	Resource, SC1, SC2, SC8
Hart High	Resource, SC1, SC3
Saugus High	Resource, SC1, SC3
Valencia	Resource, SC1, SC2, SC5
West Ranch	Resource, SC1, SC3, SC7

Alternative School	Special Education Programs
Bowman	Resource, SC1
Sequoia	SC6
Transition Learning Center	Adult transition program

Department & Procedural Changes

AT Specialist

- eliminated non-public agency cost for 45 students

SCIA rubrics & evaluation procedures

- decreased the number of students requiring SCIA support from 85 to 64

Behavior Team

- Change of placement to NPS reduced 45 to 30; extraordinary school and teacher support

ERICS Program:

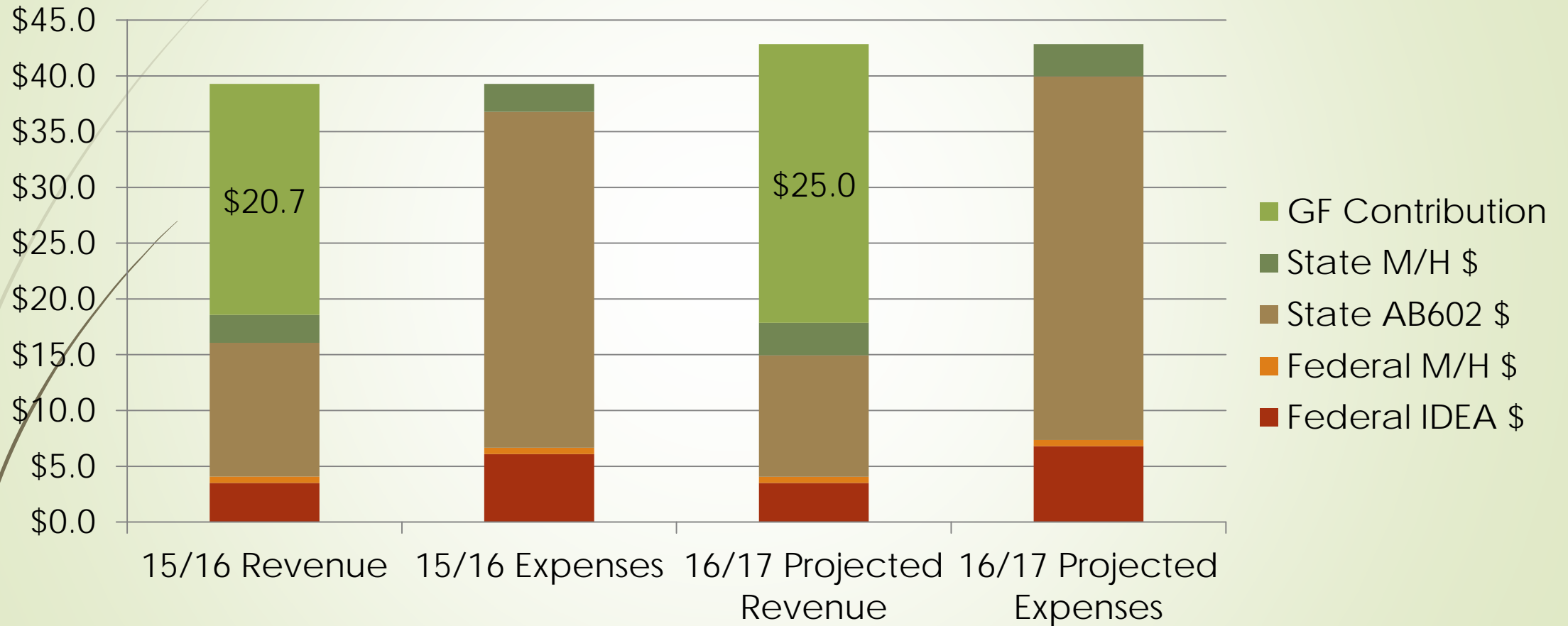
- Counseling services to all 5 districts in SCV (422 students); in threat assessments and crisis intervention



Special Education Budget

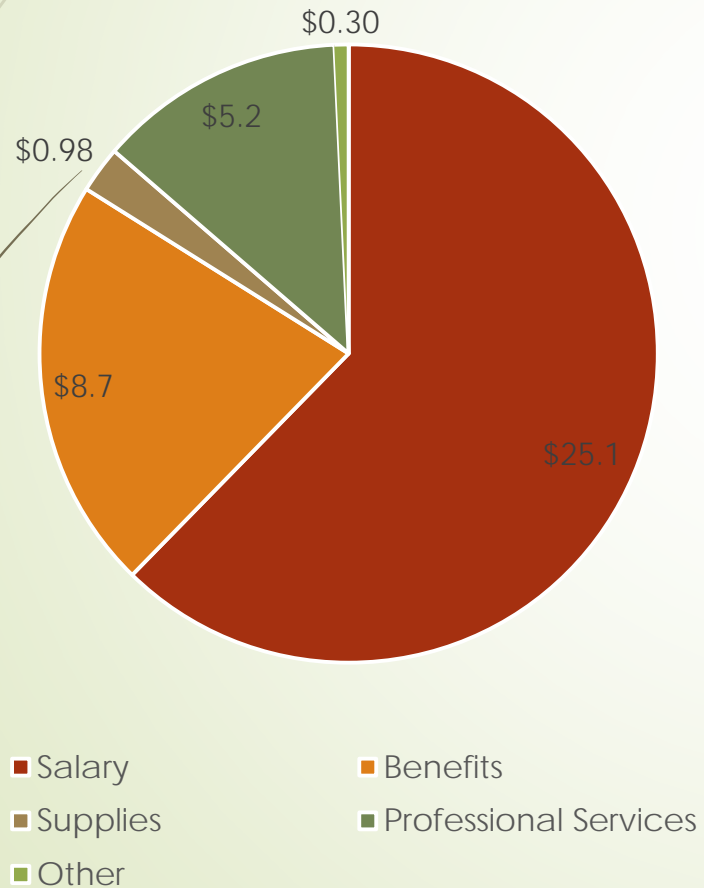
Special Education/Mental Health Finances

Amounts Displayed in Millions

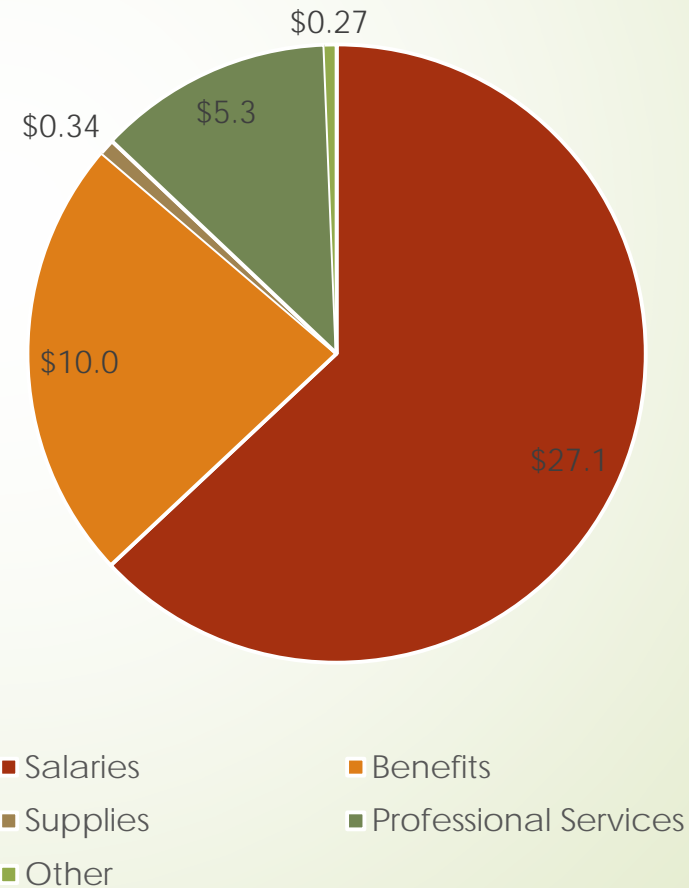


Expenditures – break down

2015/16 Actual Expenditures



2016/17 Projected Expenditures





Increase in spending

- 4% Salary Schedule Increase (Ongoing)
- CalSTRS Employer Rate (statutory) from 10.73% to 12.58% - 1.85% Increase
- CalPERS Employer Rate from 11.847% to 13.888% - 2.04% Increase
- Additional staffing based on increase in Special Ed student population
- Increase to Professional Services due to increase in student needs

Maintenance of Effort – Legal Requirements

All Districts have a Maintenance of Effort (MOE) requirement that has two standards that must be met in order to receive additional annual funds:

The **ELIGIBILITY STANDARD** requires Districts to **budget** at least the same amount of local, or state and local, funds, as it actually spent for the education of children with disabilities during the most recent fiscal year.

The **COMPLIANCE STANDARD** prohibits a District from reducing the level of **expenditures** for the education of children with disabilities from local, or state and local, funds below the level of those expenditures from the same source for the preceding fiscal year.



Maintenance of Effort – Hart District

MOE Summary for Hart District

- The Hart District **may not reduce** the amount of local, or state and local, funds that it spends for the education of children with disabilities below the amount it spent for the preceding fiscal year.
- In other words, The Hart District **must maintain (or increase)** the amount of local, or state and local, funds it spends for the education of children with disabilities when compared to the preceding fiscal year.