



# SCVi Charter Renewal

November 6th, 2019





# SCVi: A Research-Based Model

## Project-Based Learning (PBL)

- Highly Engaging
- Deeper Learning
- Exposure to Career & Postgraduate Experiences
- A Sense of Purpose
- Success (21st C) Skills
- Builds Equity, Closing the Achievement Gap
- Develops Creativity & Problem-Solving

## Social-Emotional Learning (SEL)

- Improved Academic Outcomes
- Improved Behavior
- Improves Emotional Well-Being & Mental Health
- Improved Career Preparedness
- Improved Lifetime Outcomes (reduced poverty rates, reduced involvement with law enforcement)
- Increased Learner Autonomy and Responsibility
- Improved Empathy & Tolerance

## International Baccalaureate (IB)

- Deeply Rigorous Curriculum
- Global-Minded Citizens
- Independent Thinking and Learning
- Increased College Readiness
- Improved Cultural Awareness
- Critical Thinking and Problem Solving Skills
- Deeper Levels of Reflection
- Personal Engagement in an Increasingly-Globalized, Rapidly-Changing World



# SCVi: A Highly Individualized Education

## An Individualized Learning Plan (ILP) for Every Learner

- Initial Assessment Data
- Individual Goals & Plans Developed With & For Each Learner
- Learners & Facilitators Use ILP's To Monitor Progress Throughout The Year
- The Year Culminates With Every Learner Reflecting On Their Growth & Goals

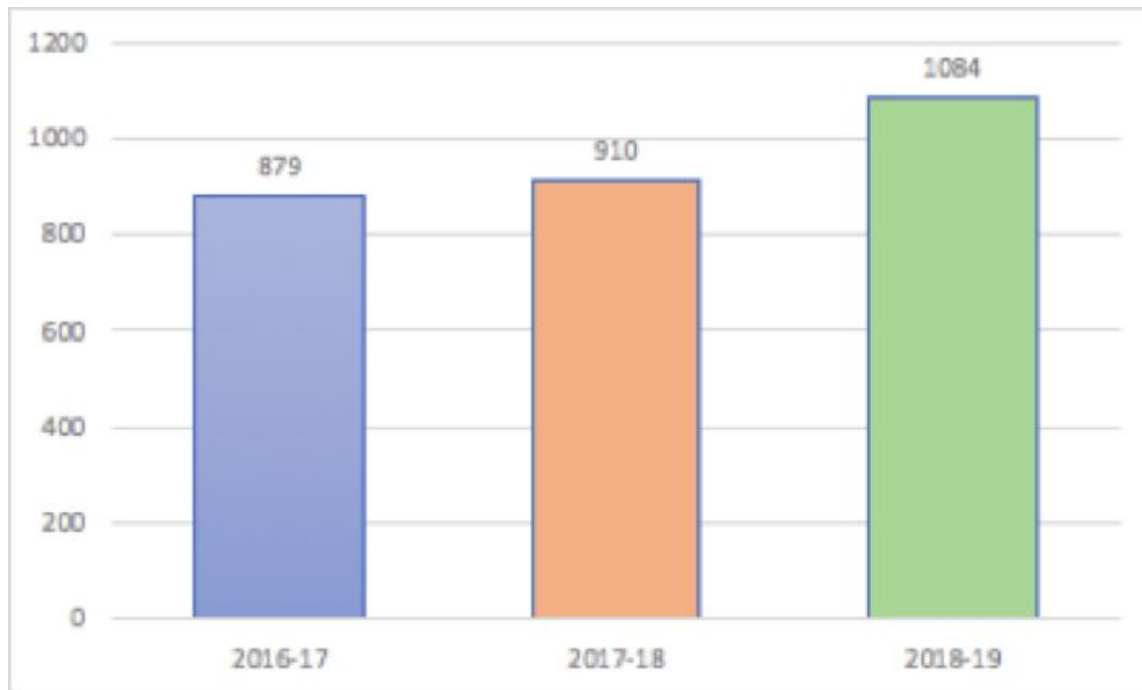
## Highly Inclusive Model

- Special Education Learners Included in the General Education Classroom
- Benefits All Populations Academically & Socially
- Builds Empathy & Resourcefulness
- Prepares Our Learners for an Inclusive Life!

## Customized Learning Programs

- Classroom-Based Learning
- Home study "Sidecar"
- Hybrid Independent Study

# Enrollment





# Student Demographics



Students by Race	Percent of Total
American Indian or Alaska Native	0.70%
Argentinean	0.40%
Asian	0.60%
Asian Indian	0.10%
Black or African American	5.80%
Cherokee	0.20%
Chinese	0.90%
Colombian	0.70%
Cuban	0.40%
Declined to State	3.20%
Filipino	2.10%
Hispanic or Latino	12.80%
Japanese	0.10%
Korean	0.20%
Mexican American	5.60%
Middle Eastern	0.10%
Nicaraguan	0.10%
Other Asian	0.80%
Other Pacific Islander	0.10%
Puerto Rican	0.60%
Spaniard	0.20%
Vietnamese	0.20%
White	64.20%

Students With Disabilities	Percent of Total
Autism (AUT)	21%
Deafness (DEAF)	1%
Emotional Disturbance (ED)	2%
Hard of Hearing (HH)	1%
Intellectual Disability (ID)	1%
Orthopedic Impairment (OI)	1%
Other Health Impairment (OHI)	21%
Specific Learning Disability (SLD)	41%
Speech or Language Impairment (SL)	10%
Multiple Disability (MD)	1%
Total	100%

Subgroups	Percent of Total
Students with Disabilities	18.70%
Low Socio Economic	25.30%
English Language Learners	4.30%

Students by Gender	Percent of Total
Female	42.50%
Male	57.50%



## Renewal Criterion 1:

Alternative measures that show increases in pupil academic achievement for all groups of pupils schoolwide and among numerically significant pupil subgroups shall be used. (Ed. Code, § 52052(f).)



## Student Data: ELA Growth Over Time

SCVI ELA: 5 Year Comparison							
Grade	2015	2016	2017	2018	2019	Cohorts	Growth 15-19
3	19%	22%	39%	37%	40%		21%
4	30%	24%	23%)	49%	45%	8%	15%
5	39%	27%	19%	31%	55%	16%	16%
6	39%	54%	49%	51%	54%	32%	15%
7	43%	53%	52%	53%	67%	48%	24%
8	43%	50%	55%	64%	60%	30%	17%
11	32%	44%	58%	56%	62%	25%	30%
Total	35%	40%	43%	50%	56%		21%



## Student Data: ELA Growth Over Time, Subgroups

SBAC by Ethnicity (Met and Exceeded)				
ELA				
Group	2015-2016	2016-2017	2017-2018	2018-2019
Hispanic or Latino	31%	33.3%	38.3%	43.1%
White	44%	48.6%	55.5%	64.7%
Two or More Races	42%	44.7%	68.4%	54.0%
Socio-economically Disadvantaged	30%	29.9%	38.9%	43.1%
Special Education	12.0%	14.3%	19.0%	29.4%
English Language Learners	9%	15.6%	25%	10.5%





## Student Data: Math Growth Over Time

SCVi MATH: 5 Year Comparison							
Grade	2015	2016	2017	2018	2019	Cohorts	Growth 15-19
3	12%	16%	22%	32%	49%		37%
4	22%	15%	21%	28%	35%	3%	13%
5	12%	11%	12%	21%	27%	5%	15%
6	26%	27%	35%	30%	29%	13%	3%
7	30%	44%	43%	29%	40%	28%	10%
8	25%	26%	29%	31%	44%	22%	19%
11	30%	13%	17%	22%	32%	19%	2%
Total	23%	23%	26%	28%	37%		14%



## Student Data: Math Growth Over Time, Subgroups

SBAC by Ethnicity (Met and Exceeded)				
Math				
Group	2015-2016	2016-2017	2017-2018	2018-2019
Hispanic or Latino	16%	15.0%	16.4%	24.1%
White	25%	31.3%	32.9%	45.2%
Two or More Races	27%	36.8%	40.5%	39.0%
Socio-economically Disadvantaged	18.0%	15.1%	16.0%	28.7%
Special Education	7.0%	6.6%	7.7%	17.3%
English Language Learners	9%	12.5%	20.8%	0%



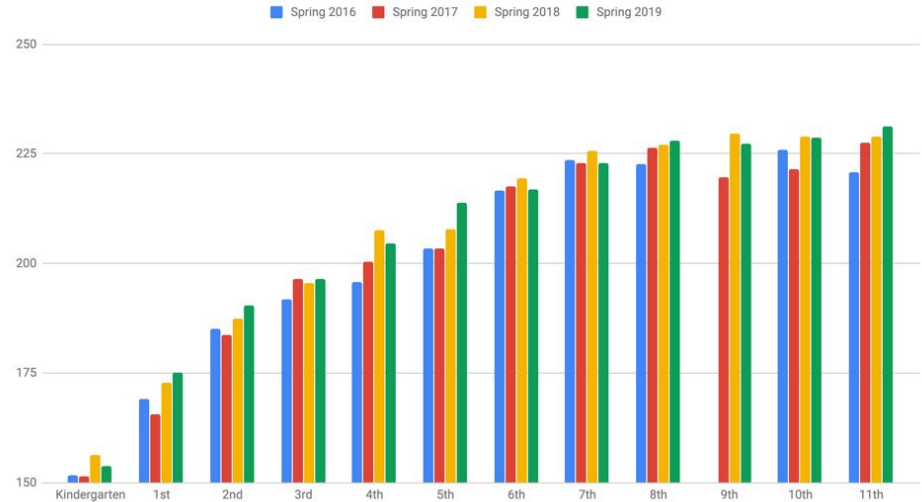
## Internal Growth Over Time: NWEA MAP ELA

### SCVi MAP NWEA Achievement Status and Growth Summary - READING Spring 2014 - Spring 2019

Year	% of Students Who Met or Exceeded Their Projected RIT	% of Projected Growth Met	% of Students at or Above National Norm
2014-2015	43.8%	76.9%	43.6%
2015-2016	49.7%	146.4%	
2016-2017	41.7%	84.1%	
2017-2018	58.5%	176.1%	
2018-2019	51.4%	95.2%	57.4%

***The percentage of students who were at or above the national norm went up 14% from 2014-2019***

SCVi NWEA MAP ELA 2016-2019





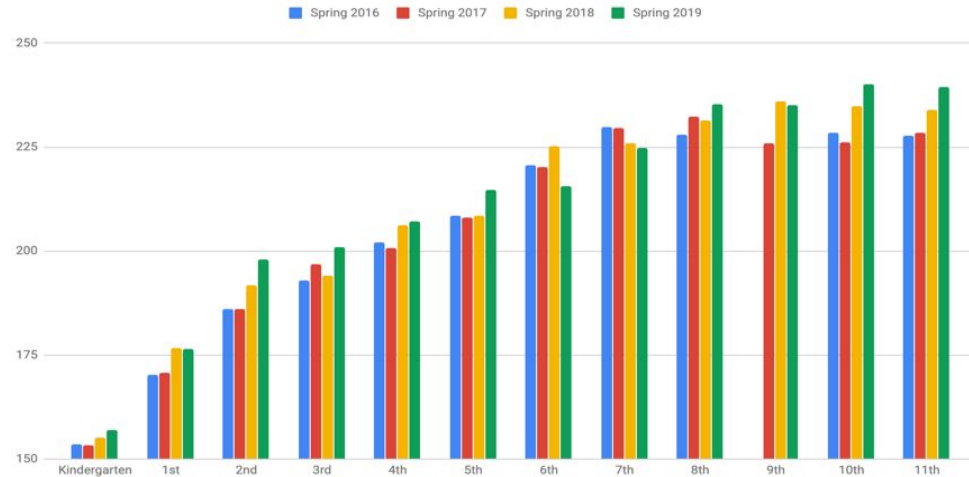
## Internal Growth Over Time: NWEA MAP Math

### SCVi MAP NWEA Achievement Status and Growth Summary - MATH Spring 2014 - Spring 2019

Year	% of Students Who Met or Exceeded Their Projected RIT	* of Grade-Level Projected Growth Met	% of Students at or Above National Norm
2014-2015	42.5%	64.3%	32.40%
2015-2016	36.0%	76.9%	
2016-2017	40.6%	86.4%	
2017-2018	51.8%	115.2%	
2018-2019	53.9%	122.00%	45.3%

***The percentage of students who were at or above the national norm went up 13% from 2014-2019***

SCVi NWEA MAP MATH 2016-2019

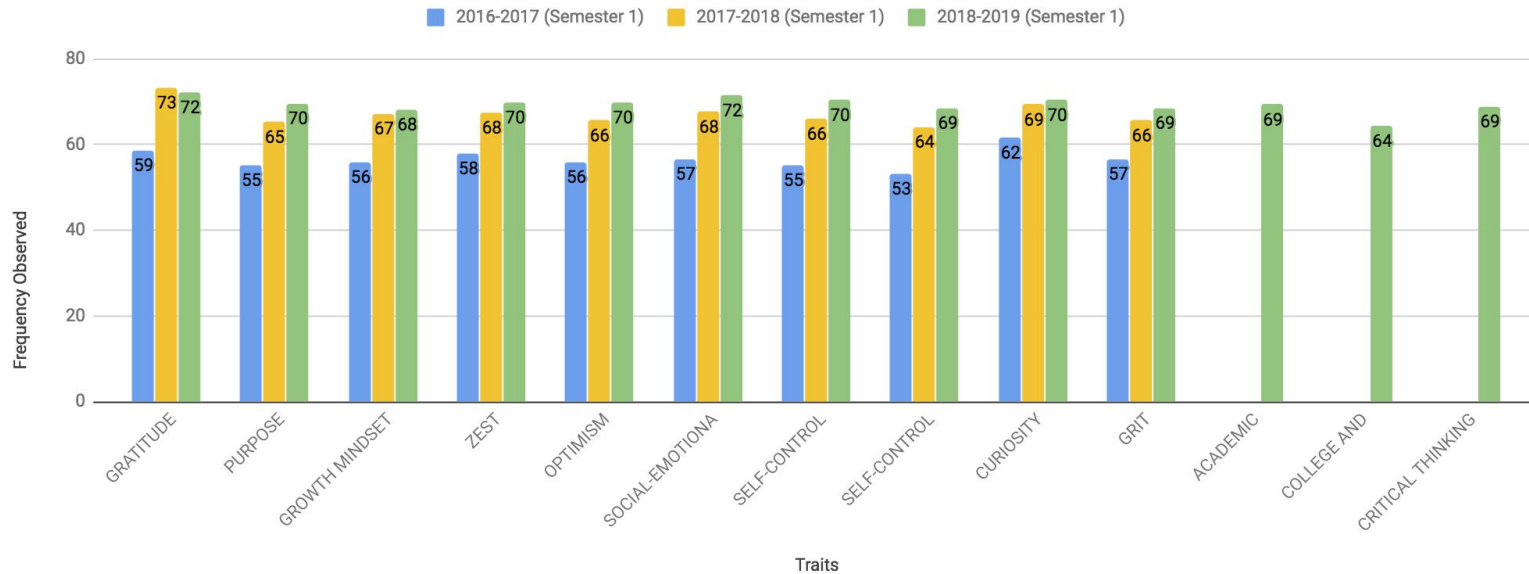




# Measuring Social Emotional Growth

## SCVi 2016-2019 Comparing Semester 1 Social Emotional Growth

Increase in the percent for trait was observable overall for all learners in SCVi school



Character  
Growth Lab  
Growth Card



# Gallup Poll

## Grades 5th-12th

### Gallup Poll Met or Exceeded U.S. Overall Scores

	Engagement	Hope	Entrepreneurial Aspiration	Career/ Financial Literacy
SCVi	X		X	X



### Engagement

The involvement in and enthusiasm for school.

ENGAGEMENT GRANDMEAN	Your School 2018	U.S. Overall 2018
<b>OVERALL</b>	<b>3.89</b>	<b>3.85</b>
At this school, I get to do what I do best every day.	3.50	3.53
My teachers make me feel my schoolwork is important.	3.89	4.00
I feel safe in this school.	3.87	3.81
I have fun at school.	3.87	3.44
I have a best friend at school.	4.23	3.37
In the last seven days, someone has told me I have done good work at school.	3.65	3.61
In the last seven days, I have learned something interesting at school.	3.78	3.86
The adults at my school care about me.	4.10	3.83
I have at least one teacher who makes me excited about the future.	4.15	4.08



### Entrepreneurial Aspiration

The talent and energy for building businesses that survive, thrive and employ others.

ENTREPRENEURIAL ASPIRATION GRANDMEAN	Your School 2018	U.S. Overall 2018
<b>OVERALL</b>	<b>2.67</b>	<b>2.42</b>
I will invent something that changes the world.	2.87	2.66
I plan to start my own business.	3.12	3.03
I am learning how to start and run a business.	2.74	2.36
I have my own business now.	1.95	1.51



### Career/Financial Literacy

The information, attitudes and behaviors that students need to practice for healthy participation in the economy.

CAREER/FINANCIAL LITERACY GRANDMEAN	Your School 2018	U.S. Overall 2018
<b>OVERALL</b>	<b>3.28</b>	<b>3.28</b>
I have a paying job now.	2.20	2.11
I am learning how to save and spend money.	3.68	3.76
I have a bank account with money in it.	3.36	3.17
I am involved in at least one activity, such as a club, music, sports or volunteering.	3.88	4.05



### Hope

The ideas and energy students have for the future.

HOPE GRANDMEAN	Your School 2018	U.S. Overall 2018
<b>OVERALL</b>	<b>3.96</b>	<b>4.20</b>
I know I will graduate from high school.	4.32	4.62
I have a great future ahead of me.	4.04	4.36
I can think of many ways to get good grades.	3.92	4.15
I have many goals.	3.87	4.13
I can find many ways around problems.	3.44	3.87
I have a mentor who encourages my development.	3.63	3.47
I know I will find a good job in the future.	4.50	4.35

## Renewal Criterion 2:

The entity that granted the charter determines that the academic performance of the charter school is **at least equal** to the academic performance of the public schools that the charter school pupils would otherwise have been required to attend, as well as the academic performance of the schools in the school district in which the charter school is located, taking into account the composition of the pupil population that is served at the charter school. (Ed. Code, § 47607(b)(4).)



# Districts Served

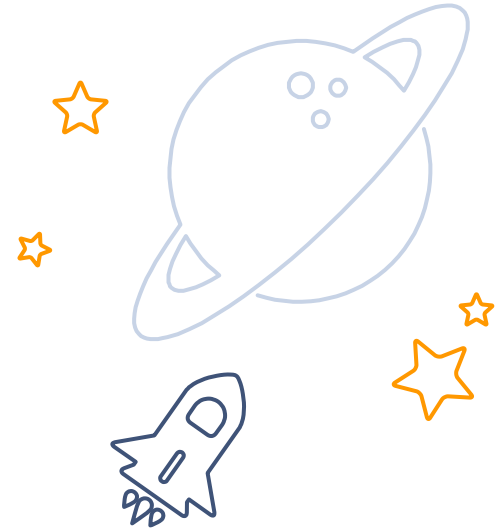


#	District	Percent
1	*LAUSD	24.60%
2	*William S. Hart Union High	18.30%
3	*Castaic	17.80%
4	Saugus	14.90%
5	Newhall	8.10%
6	*Fillmore	5.60%
7	Sulphur	4.90%
8	Lancaster Elementary	2.70%
9	*El Tejon Unified	1.50%
10	*Hughes-Elizabeth Lakes Union Elementary	1.00%
11	*Acton-Agua Dulce Unified	0.70%

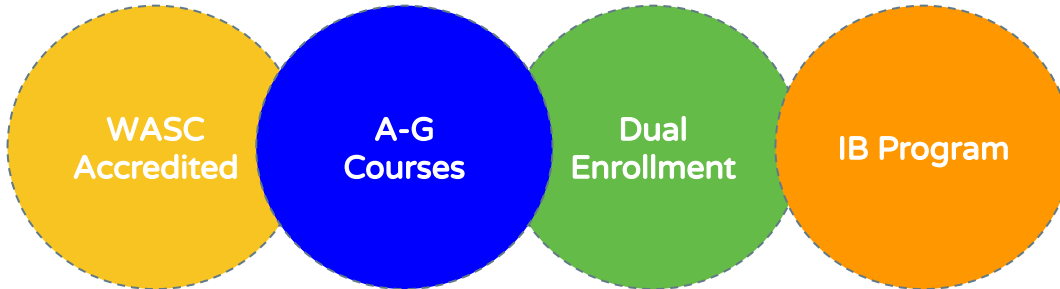
#	District	Percent
12	Palmdale Elementary	0.60%
13	*Antelope Valley	0.40%
14	*Burbank Unified	0.40%
15	*Simi Valley Unified	0.30%
16	*Mojave Unified	0.20%
17	Keppel Union Elementary	0.10%
18	*La Canada Unified	0.10%
19	*Maricopa Unified	0.10%
20	*Rim of the World Unified	0.10%
21	*Westside	0.10%



# Graduation



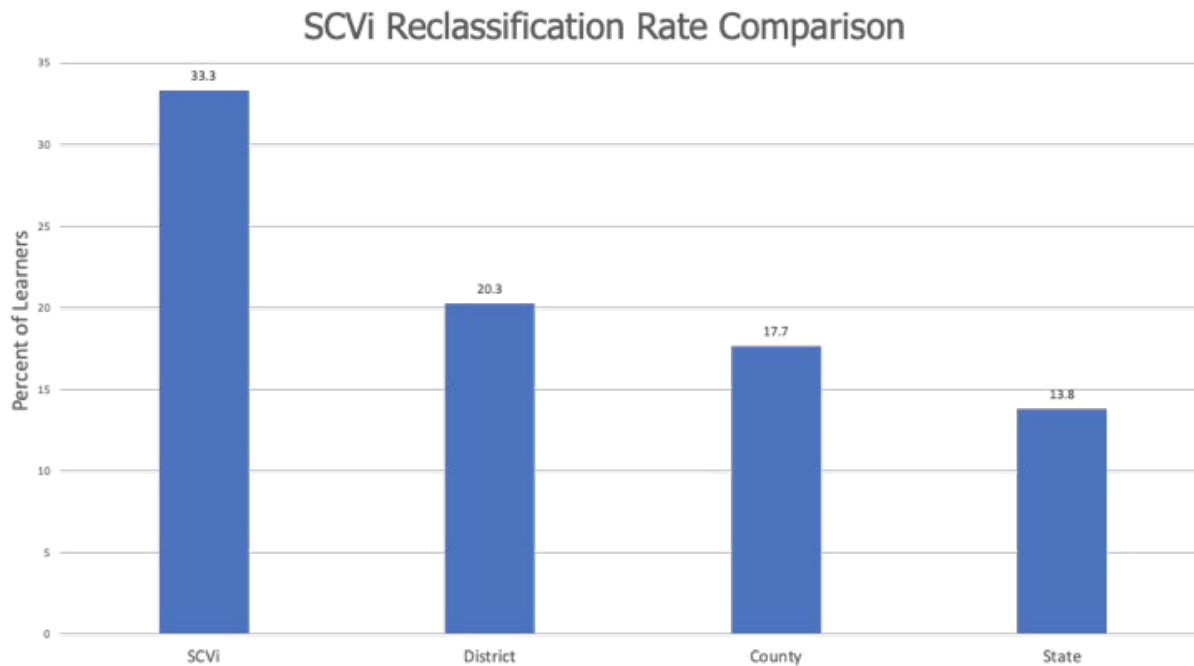
SCVi UC/CSU Eligible Graduates		
Change Over Time 2016-2018		
Institution	UC/CSU Eligible 16-17	UC/CSU Eligible 17-18
SCVi	100%	85%
Hart	50%	48%
State	45%	47%



91.8%  
Grad Rate



## Student Data: Reclassification Rate



# Student Data: Comparison by District




2018-2019 SCVi ELA Threshold Scale Score Comparison to District												
7th-11th Low, Medium, and High Bands												
Black = SCVi                      Blue = William S. Hart District												
Grade	Level 1 Standard Not Met			Level 2 Standard Nearly Met			Level 3 Standard Met			Level 4 Standard Exceeded	SCVi % Standard Met or Exceeded	Hart % SBAC Standard Met or Exceeded
7	2258 to 2478			2479 to 2551			2552 to 2648			>2649	67	71
							2581	2593				
	2258 to 2331	2332 to 2405	2406 to 2478	2479 to 2502	2503 to 2526	2527 to 2551	2552 to 2583	2584 to 2615	2616 to 2648			
8	2288 to 2486			2487 to 2566			2567 to 2667			>2668	59	69
							2592	2607				
	2288 to 2354	2355 to 2420	2421 to 2486	2487 to 2512	2513 to 2539	2540 to 2566	2567 to 2599	2600 to 2633	2634 to 2667			
11	2299 to 2492			2493 to 2582			2583 to 2681			>2682	62	80
							2613		2663			
	2299 to 2363	2264 to 2328	2329 to 2392	2493 to 2522	2523 to 2551	2552 to 2582	2583 to 2615	2616 to 2647	2648 to 2681			

# 2018-2019 SCVi Math Threshold Scale Score Comparison to District 7th-11th Low, Medium, and High Bands

Black = SCVi

Blue = William S. Hart District

Grade	Level 1 Standard Not Met			Level 2 Standard Nearly Met			Level 3 Standard Met			Level 4 Standard Exceeded	% Standard Met or Exceeded	Hart % Standard Met or Exceeded
7	2250 to 2483			2484 to 2566			2567 to 2634			>2635	40%	54%
				2510			2572					
	2250 to 2328	2329 to 2408	2409 to 2483	2484 to 2510	2511 to 2538	2539 to 2566	2567 to 2588	2589 to 2611	2612 to 2634			
8	2265 to 2503			2504 to 2585			2586 to 2652			>2653	44%	54%
						2566	2589					
	2265 to 2344	2345 to 2425	2426 to 2503	2504 to 2530	2531 to 2557	2558 to 2585	2586 to 2607	2608 to 2629	2630 to 2652			
11	2280 to 2542			2543 to 2627			2628 to 2717			>2718	32%	51%
				2570		2627						
	2280 to 2367	2368 to 2454	2455 to 2542	2543 to 2570	2571 to 2598	2599 to 2627	2628 to 2657	2658 to 2686	2687 to 2717			

  
Student Data:  
Comparison  
by District



## Student Data: Comparison by School

ELA		
SCVI	La Mesa	% Difference
75.0%	54.95%	20.1%
SCVI	Rio Norte	% Difference
68.8%	81.96%	-13.2%
SCVI	Arroyo Seco	% Difference
50.0%	72.47%	-22.5%
SCVI	Valencia HS	% Difference
77.8%	79.21%	-1.4%

Math		
SCVI	La Mesa	% Difference
50.0%	43.48%	6.5%
SCVI	Rio Norte	% Difference
25.0%	63.29%	-38.3%
SCVI	Arroyo Seco	Difference
38.9%	54.75%	-15.9%
SCVI	Valencia HS	% Difference
44.4%	56.56%	-12.1%



## Student Data: Comparison to LAUSD

2018-2019 SBAC ELA Scores		
Grade	LAUSD	SCVi
3	42.92%	40.00%
4	43.43%	44.12%
5	44.65%	55.84%
6	41.23%	54.08%
7	43.71%	67.32%
8	41.14%	59.26%
11	51.70%	61.70%
Total	43.90%	55.78%

ELA		
SCVi	Millikan MS	
% Met/ Exceeded	% Met/ Exceeded	% Difference
66.7%	55.89%	10.8%
SCVi	Van Nuys MS	% Difference
84.2%	22.53%	61.7%

2018-2019 SBAC Math Scores		
Grade	LAUSD	SCVi
3	44.10%	49.10%
4	38.01%	33.82%
5	31.10%	27.63%
6	32.50%	28.86%
7	30.46%	39.60%
8	29.24%	43.52%
11	25.34%	31.92%
Total	33.47%	36.42%

Math		
SCVi	Millikan MS	
% Met/ Exceeded	% Met/ Exceeded	% Difference
66.7%	43.99%	22.7%
SCVi	Van Nuys MS	% Difference
78.9%	15.99%	63.0%



# SCVi Financial Snapshot

## SANTA CLARITA VALLEY INTERNATIONAL CHARTER SCHOOL 5-Year Budget Summary

Object Code	REVENUE	2020-21	2021-22	2022-23	2023-24	2024-25
8011	State Aid	5,847,381	6,351,941	7,059,743	7,799,672	7,924,232
8012	EPA	1,652,081	1,693,212	1,772,535	1,849,247	1,881,495
8096	In Lieu Taxes	1,993,053	2,040,506	2,135,414	2,230,321	2,277,774
8100	Federal Revenue (SpEd)	124,509	122,476	125,392	131,225	137,057
8311	Other State Funding Apportionments (SpEd)	528,368	540,949	566,109	591,269	605,071
8312	Other State Funding Apportionments (Mental Health)	84,000	84,000	84,000	84,000	84,000
8250	Child Nutrition	28,906	28,906	28,906	28,906	28,906
8550	Other State Revenue (Mandated Costs)	26,243	28,568	30,495	32,820	32,124
8560	Other State Revenue (Lottery)	209,525	214,514	224,492	234,469	239,942
8640	Other Revenues	586,579	586,579	586,579	586,579	586,579
	<b>Total Revenue</b>	<b>11,080,646</b>	<b>11,691,651</b>	<b>12,613,665</b>	<b>13,568,508</b>	<b>13,797,180</b>
	<b>EXPENDITURES</b>					
1000	Certificated Salaries	3,330,336	3,631,256	4,092,260	4,452,252	4,622,521
2000	Classified Salaries	950,687	969,701	1,030,547	1,130,376	1,152,984
3101	STRS	612,782	657,257	740,699	805,858	836,676
3000	Non-STRS Employee Benefits	645,596	695,945	791,344	879,486	919,663
4000	Books & Supplies	580,002	597,518	591,660	597,576	603,552
5200	Professional Development	30,000	30,000	30,000	30,000	30,000
5310	Dues & Memberships	17,252	17,252	17,424	17,599	17,775
5400	Insurance	7,210	7,210	7,282	7,355	7,429
5500	Operations - Utilities	185,391	187,244	189,117	191,008	192,918
5610	Operations - Facilities Rent & CAM	1,716,268	1,750,593	1,785,605	1,821,317	1,857,743
5600	Operations - Other Facilities	63,630	64,266	64,909	65,558	66,214
5801	Service Fees	1,423,877	1,512,849	1,645,154	1,781,886	1,812,525
5802	District Oversight Fees	94,925	100,857	109,677	118,792	120,835
5800	All Other Operating Exp. (Excluding Int Exp)	660,313	666,670	673,092	679,577	686,127
5900	Communications	60,443	61,048	61,658	62,275	62,898
6000	Capital Outlay	150,000	150,000	150,000	150,000	150,000
	<b>Total Expenditures</b>	<b>10,528,712</b>	<b>11,099,667</b>	<b>11,980,428</b>	<b>12,790,917</b>	<b>13,139,859</b>
	Change in net assets	551,934	591,984	633,237	777,591	657,320
	Reserve for Economic Uncertainty (5%)	526,436	554,983	599,021	639,546	656,993
	<b>Net Income</b>	<b>25,498</b>	<b>37,000</b>	<b>34,215</b>	<b>138,045</b>	<b>327</b>





A person with short brown hair, seen from the back, is looking at a wall covered in various design-related items. The wall is a collage of papers, photos, and sketches. Some papers show hand-drawn diagrams, others show photographs of interior spaces or people, and some have handwritten notes. The person is wearing a grey and black striped sweater. The overall scene suggests a creative workspace or a place where design ideas are being explored and organized.

## Learner Spotlight Video



# Thank you

We look forward to our continued partnership!

