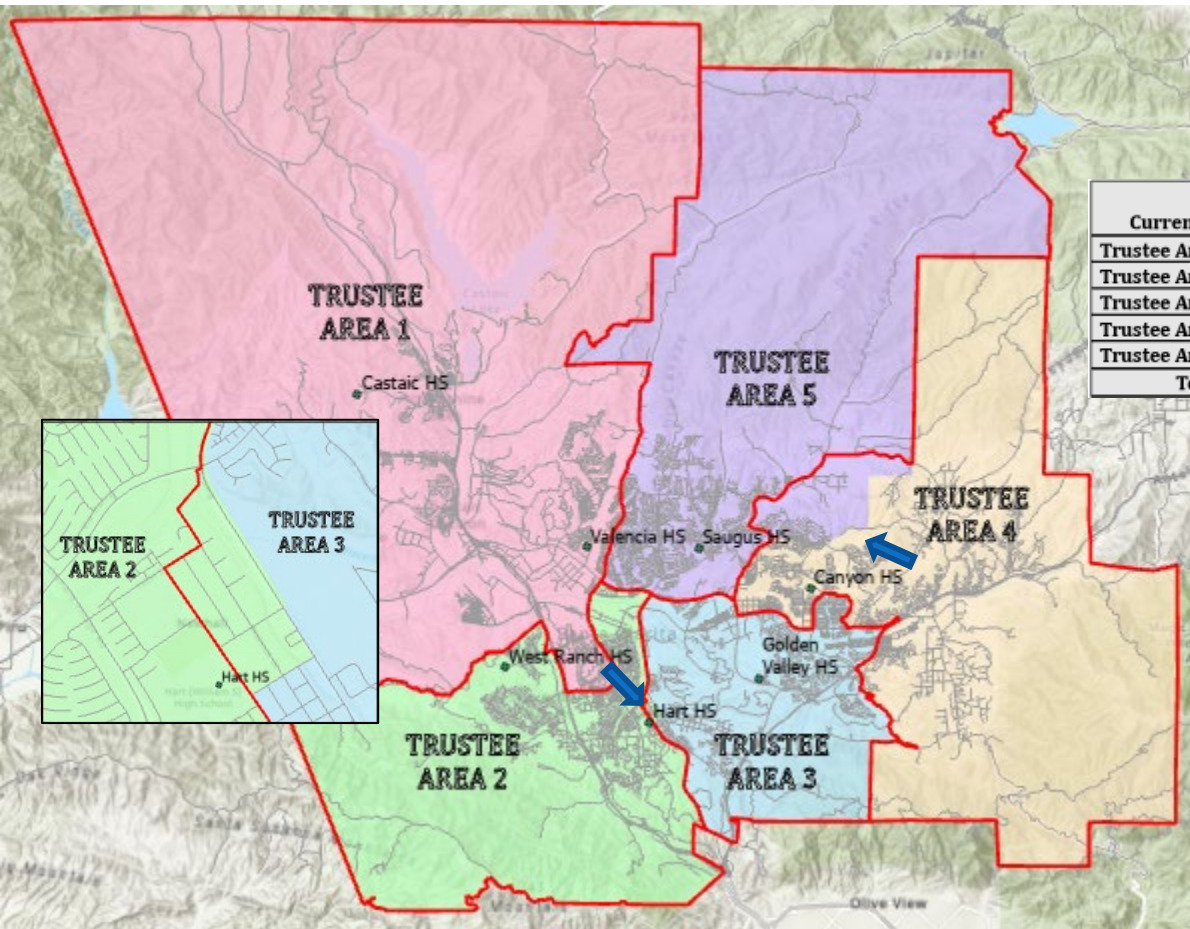
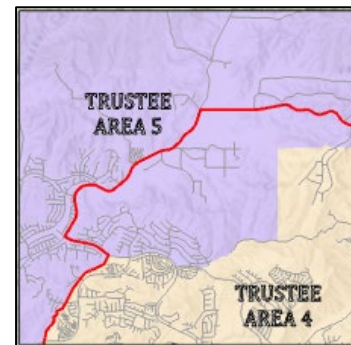


Scenario 2



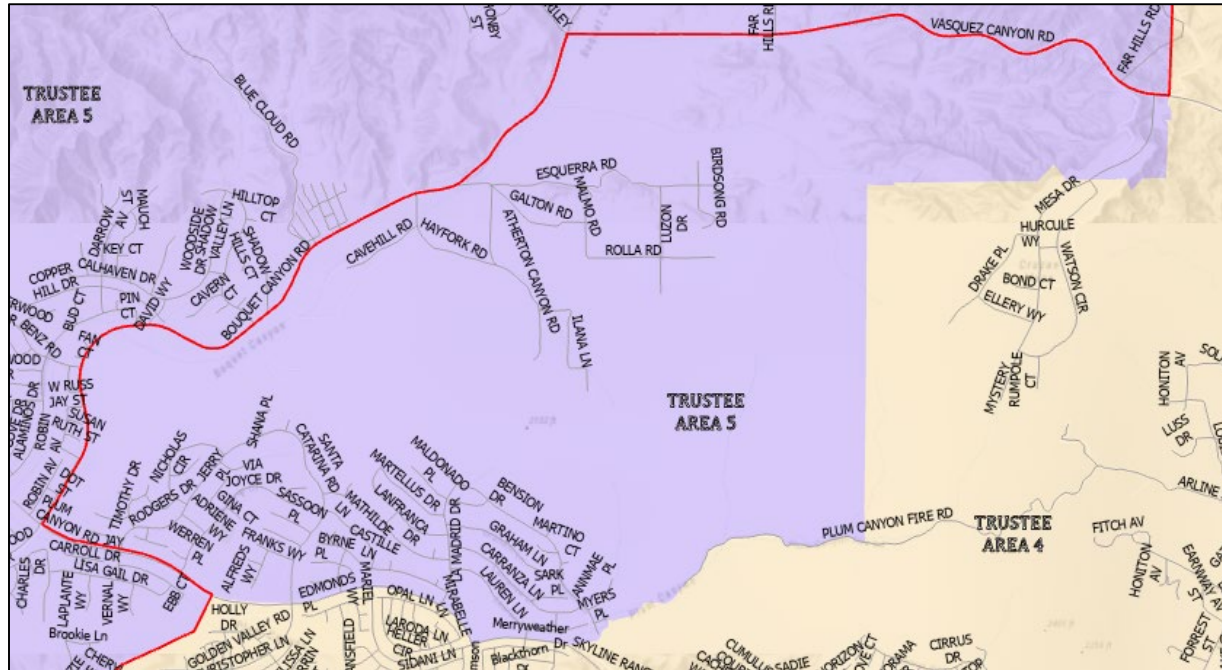
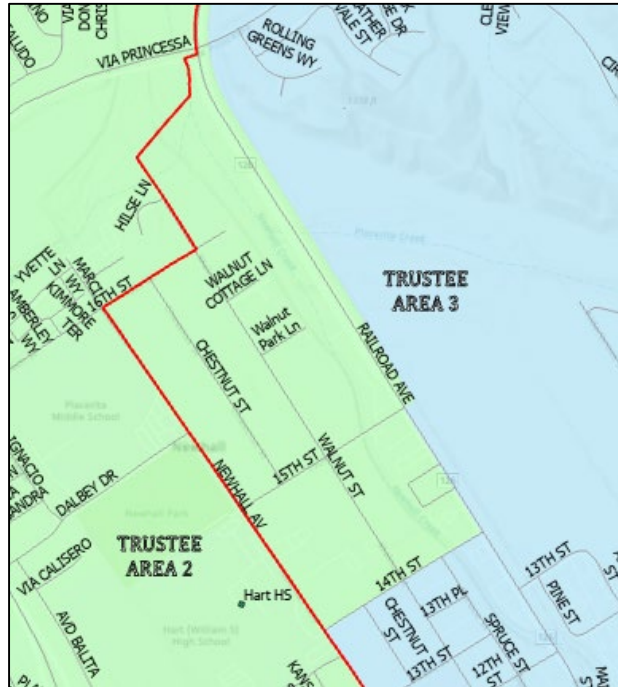
Current	Total Population	Total Population Variance	Citizen Voting Age Population 2015-2019 Estimate
Trustee Area 1	57,198	-0.45%	37,430
Trustee Area 2	57,601	0.25%	37,874
Trustee Area 3	55,273	-3.80%	32,997
Trustee Area 4	58,188	1.27%	36,125
Trustee Area 5	59,023	2.73%	38,836
Totals	287,283	Max Variance 6.53%	183,262

2020 Target = 57,457

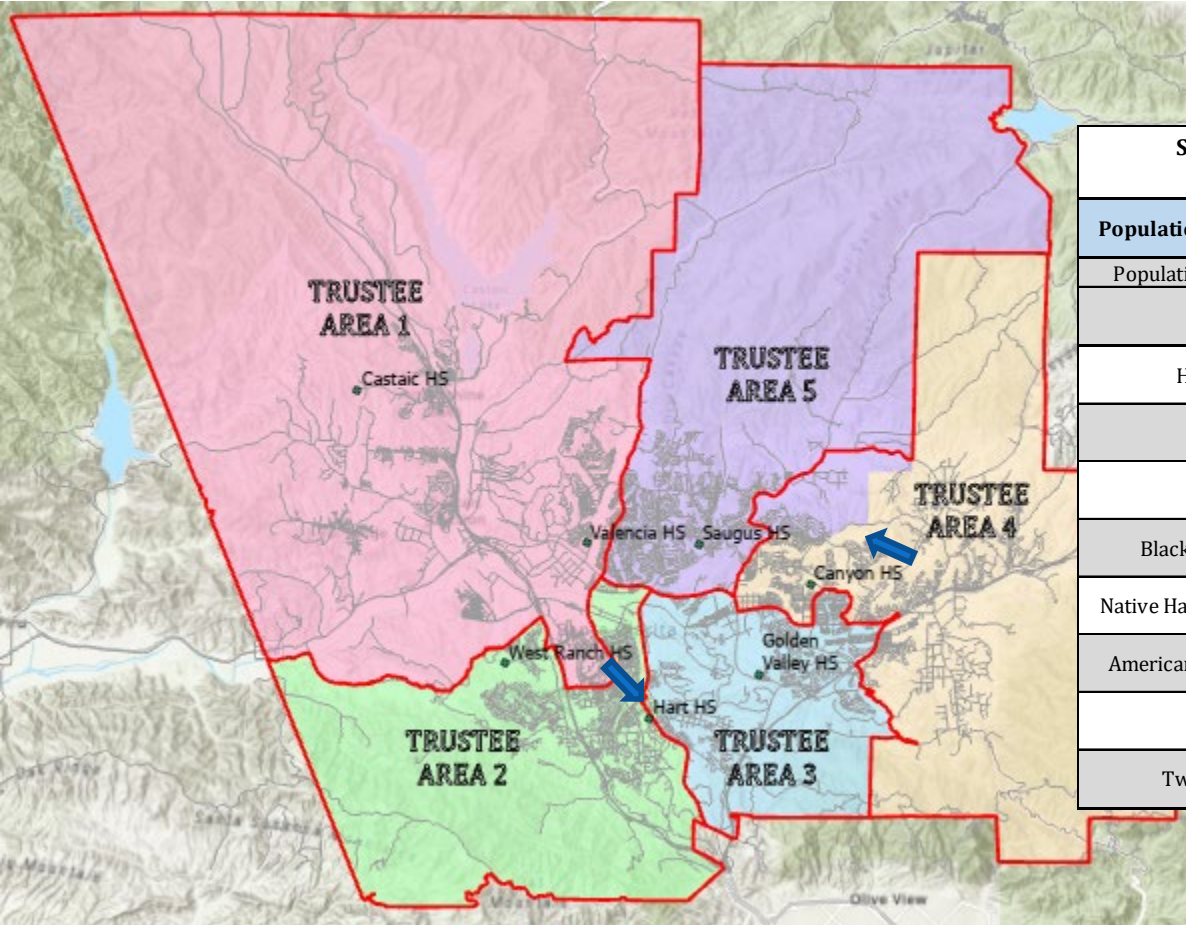


No displacement of any current Trustee Members

Scenario 2 - Areas of Change



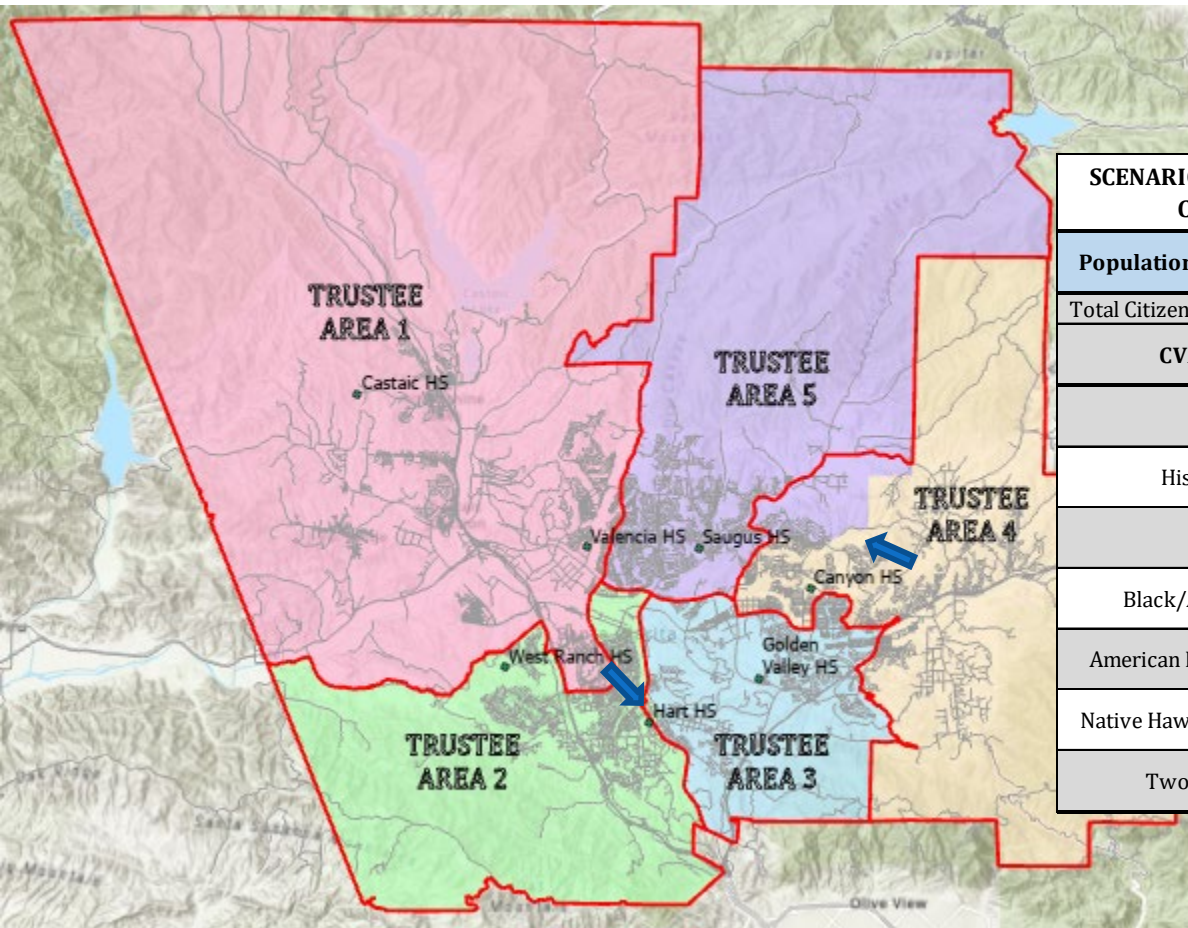
Scenario 2



SCENARIO 2 - WM. S. HART UHSD TRUSTEE AREAS WITH POPULATION AND RACE INFORMATION (2020 CENSUS)					
Population/Race Breakdowns	TRUSTEE AREA 1	TRUSTEE AREA 2	TRUSTEE AREA 3	TRUSTEE AREA 4	TRUSTEE AREA 5
Population/Race Breakdowns	57,198	57,601	55,273	58,188	59,023
Variances	-259	144	-2,184	731	1,566
	-0.45%	0.25%	-3.80%	1.27%	2.73%
Hispanic/Latino	17,263	16,035	26,045	22,952	14,932
	30.18%	27.84%	47.12%	39.44%	25.30%
White	25,037	28,020	17,807	22,914	32,728
	43.77%	48.64%	32.22%	39.38%	55.45%
Asian	8,492	8,769	5,801	6,644	6,066
	14.85%	15.22%	10.50%	11.42%	10.28%
Black/African American	3,127	1,588	2,999	2,769	1,709
	5.47%	2.76%	5.43%	4.76%	2.90%
Native Hawaiian/Pacific Islander	93	61	67	82	76
	0.16%	0.11%	0.12%	0.14%	0.13%
American Indian/Alaska Native	103	136	126	117	98
	0.18%	0.24%	0.23%	0.20%	0.17%
Other	420	328	345	314	339
	0.73%	0.57%	0.62%	0.54%	0.57%
Two or More Races	2,663	2,664	2,083	2,396	3,075
	4.66%	4.62%	3.77%	4.12%	5.21%

2020 Target = 57,457

Scenario 2



SCENARIO 2 - - WM. S. HART UHSD TRUSTEE AREA BOUNDARIES WITH CITIZEN VOTING AGE POPULATION DATA (2015-2019)

Population/Race Breakdowns	TRUSTEE AREA 1	TRUSTEE AREA 2	TRUSTEE AREA 3	TRUSTEE AREA 4	TRUSTEE AREA 5
Total Citizen Voting Age Population	37,430	37,874	32,997	36,125	38,836
CVAP Variance	778	1,222	-3,655	-527	2,184
	2.12%	3.33%	-9.97%	-1.44%	5.96%
White	19,153	22,730	14,739	18,240	24,907
	51.17%	60.01%	44.67%	50.49%	64.13%
Hispanic/Latino	10,103	7,686	11,682	11,235	8,121
	26.99%	20.29%	35.40%	31.10%	20.91%
Asian	4,618	4,517	3,536	3,657	3,664
	12.34%	11.93%	10.72%	10.12%	9.43%
Black/African American	2,358	1,386	1,965	1,838	1,358
	6.30%	3.66%	5.96%	5.09%	3.50%
American Indian/Alaska Native	95	93	131	78	62
	0.25%	0.25%	0.40%	0.22%	0.16%
Native Hawaiian/Pacific Islander	61	53	0	13	17
	0.16%	0.14%	0.00%	0.04%	0.04%
Two or More Races	1,042	1,409	944	1,064	707
	2.78%	3.72%	2.86%	2.95%	1.82%